



## S6

### Serie sensori compatti 50x50 mm multitensione

- Dimensioni compatte 50x50 mm
- Modelli multitensione Vca/Vcc con uscita a relè
- Modello 10-30 Vcc con uscita a transistor
- Cavo o connettore M12 a 4 poli



SENSORS

#### APPLICAZIONI

- Macchine automatiche
- Linee di confezionamento
- Linee di trasporto
- Magazzini automatici

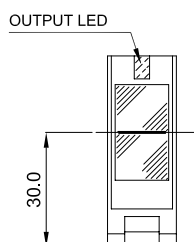
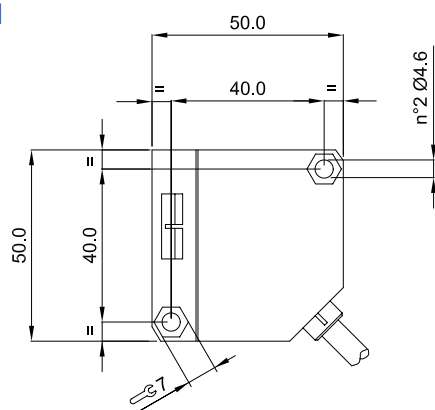


S6		
Proiettore/ricevitore		0...20 m
Sbarramento a retroriflessione (su riflettore R2)		0.1...6 m
Sbarramento polarizzato (su riflettore R2)		0.1...5 m
Tasteggio diffuso		10...900 mm
		10...2000 mm
Soppressione di sfondo		30...100 mm
		30...250 mm
		100...500 mm
Alimentazione	Vcc	10...30 V
	Vca	
	Vca/cc	15...264 Vca/Vcc
	PNP	▪
Tipo di uscita	NPN	▪
	NPN/PNP	▪
	relè	▪
	altro	
Collegamento	cavo	▪
	connettore	▪
	pig-tail	
Dimensioni indicative (mm)		18x50x50
Materiale contenitore		ABS
Protezione meccanica		IP65

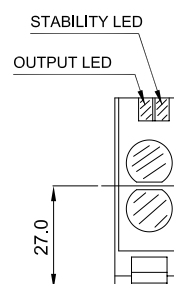


DATI TECNICI	
Alimentazione	10 ... 30 Vcc valori limite (mod. S6/S6T/S6R-5) 15 ... 264 Vca/Vcc (48 ... 60 Hz) valori limite (mod. S6-1)
Tensione di ripple	2 Vpp max.
Assorbimento (esclusa corrente di uscita)	30 mA max. (mod. S6/S6T/S6R-5) 40 mA max. (mod. S6-1)
Emissione luminosa	LED IR 880 nm LED rosso 660 nm (mod. S6/S6R/S6T...B/M10)
Impostazione	trimmer di sensibilità (escluso mod. S6...G, S6R-5-M) vite di regolazione (mod. S6/S6T/S6R-5-M)
Modo operativo	selezione LUCE/BUIO via cavo o connettore (mod. S6/S6T/S6R-5) selezione LUCE/BUIO via uscita NA/NC (mod. S6R-5-M) selezione LUCE/BUIO via trimmer (mod. S6-1)
Indicatori	LED rosso OUTPUT (escluso mod. S6...G), LED POWER (mod. S6...G) LED verde STABILITY (mod. S6-5-M25)
Tipo di uscita	NPN/PNP (mod. S6) PNP (mod. S6T) NPN o PNP, NC; NA (mod. S6R) Relè 1 contatto NA e NC 250 Vca, 30 Vcc min. carico applicabile 5 Vcc, 10 mA (mod. S6-1)
Corrente di uscita	100 mA max., 3 A max. (mod. S6-1)
Tensione di saturazione	1,5 V max. (uscita NPN/PNP)
Tempo di risposta	1 ms max. 2 ms max. (mod. S6/S6R/S6T...F/G) 30 ms max. (mod. S6-1)
Frequenza di commutazione	500 Hz 250 Hz max. (mod. S6/S6R/S6T...F/G) 16 Hz (mod. S6-1)
Collegamento	cavo 2 m Ø 6 mm (mod. S6-1), cavo 2 m Ø 5 mm (mod. S6-5), connettore M12 4 poli (mod. S6T-S6R)
Rigidità dielettrica	500 Vca, 1 min. tra parti elettroniche e contenitore
Resistenza d'isolamento	>20 MΩ, 500 Vcc tra parti elettroniche e contenitore
Protezione elettrica	classe 2, classe 1 (mod. S6-1)
Protezione meccanica	IP65
Reiezione alla luce ambiente	come prescritto da EN 60947-5-2
Vibrazioni	Ampiezza 0.5 mm, frequenza 10 ... 55 Hz, per ogni asse (EN60068-2-6)
Resistenza agli urti	11 ms (30 G) 6 shock per ogni asse (EN60068-2-27)
Materiale contenitore	ABS UL 94V-0
Materiale lenti	plastica PMMA
Temperatura di funzionamento	-25 ... 55 °C
Temperatura di immagazzinamento	-25 ... 70 °C
Peso	160 g max. vers. cavo, 40 g max. vers. conn.

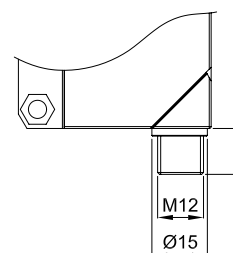
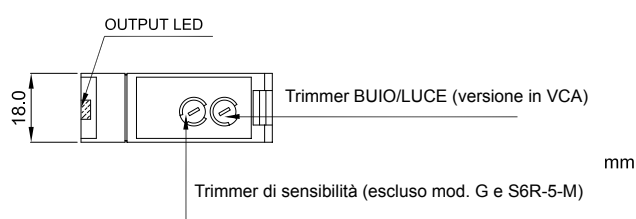
## DIMENSIONI



### Soppressione di sfondo



### Connettore M12

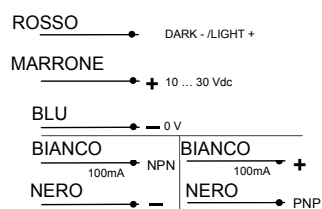




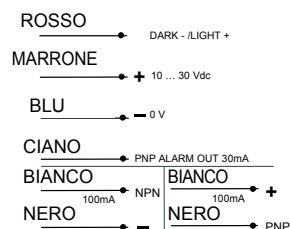
## COLLEGAMENTI

### MODELLI IN VCC

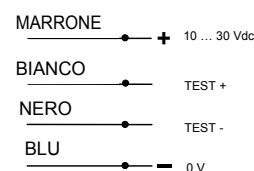
#### versione NPN/PNP



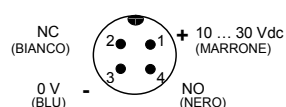
#### Ricevitore - versione NPN/PNP



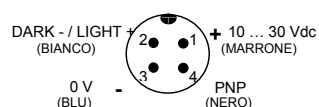
#### Proiettore - versione NPN/PNP



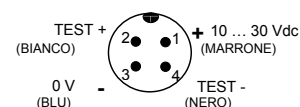
#### Versione NPN o PNP e NC/NA



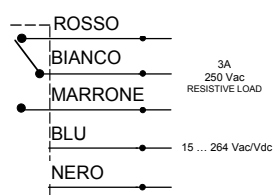
#### Versione PNP



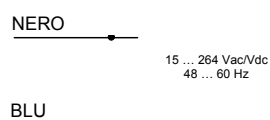
#### Proiettore - versione PNP



### MODELLI IN VAC



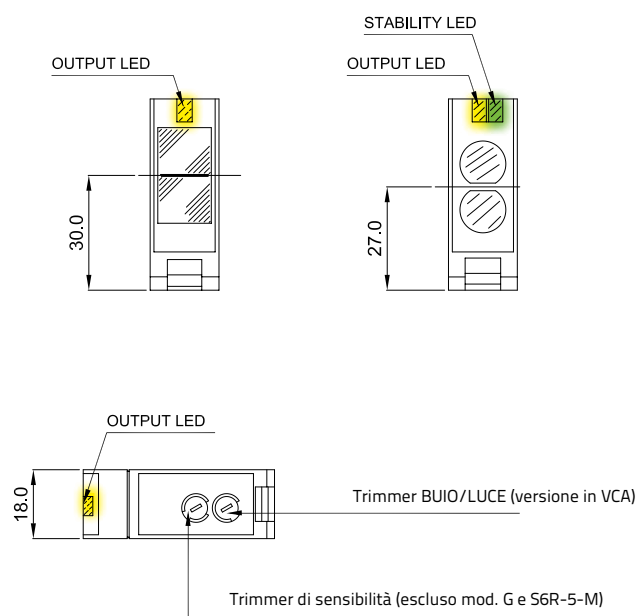
#### Proiettore



## INDICATORI E IMPOSTAZIONI

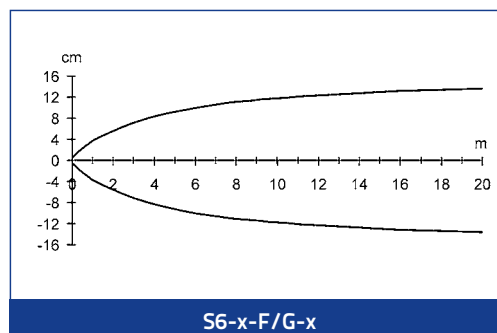
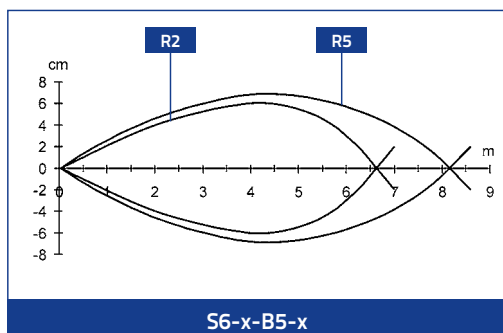
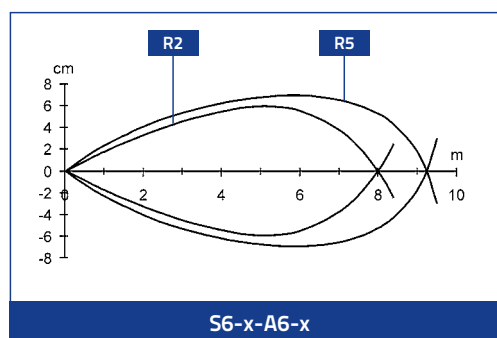
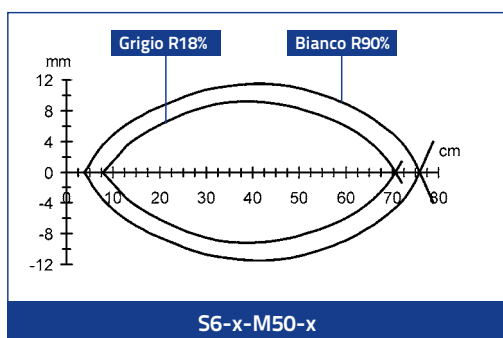
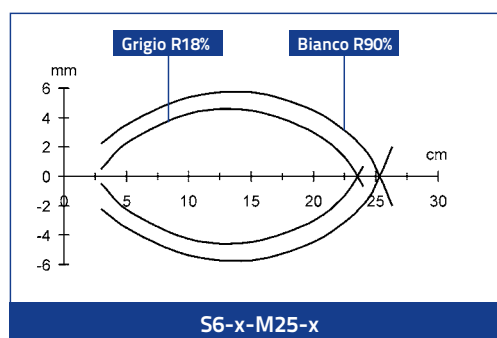
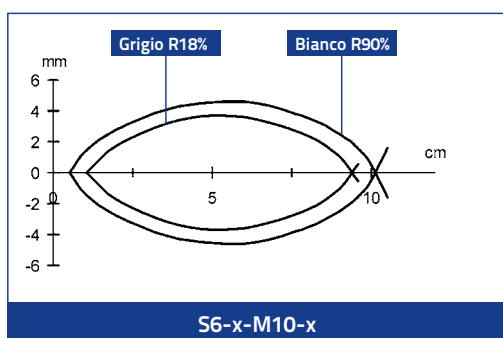
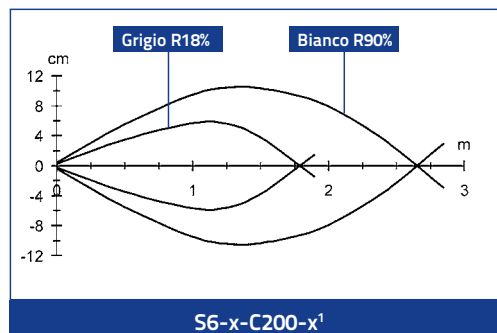
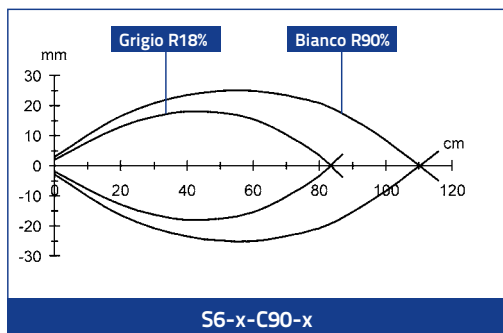


#### Soppressione di sfondo





## DIAGRAMMI DI RILEVAZIONE



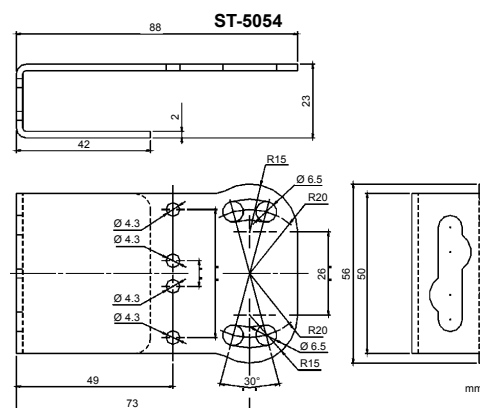
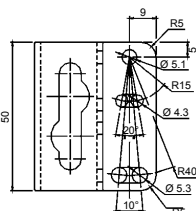
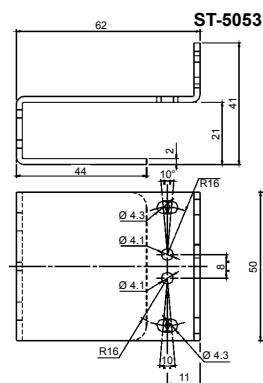
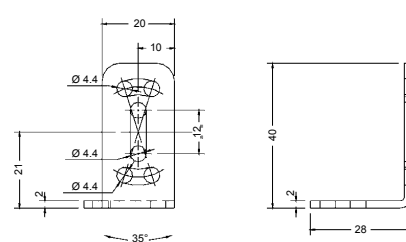
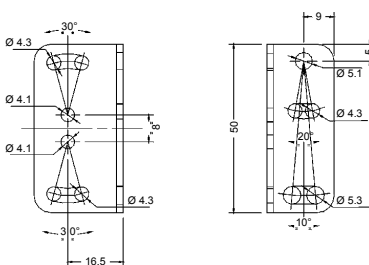
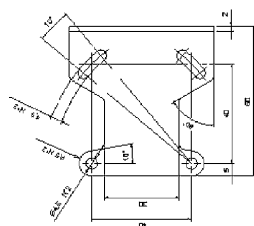
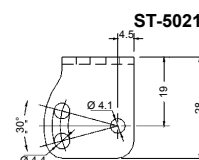
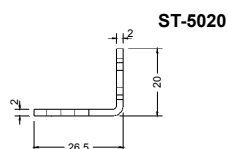
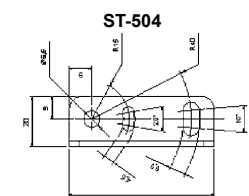
I diagrammi di rilevazione indicano la distanza operativa tipica con Riserva di segnale 1.



TABELLA DI SELEZIONE MODELLI E CODICI D'ORDINE

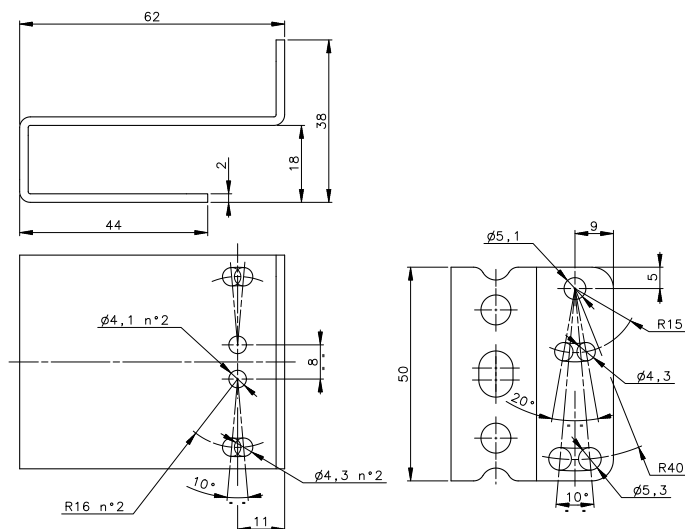
FUNZIONE OTTICA	DISTANZA OPERATIVA	ALIMENTAZIONE	USCITA	MODELLO	N° ORDINE
Tasteggio diffuso a corta distanza	10...900 mm	15...264 V CA	relè SPDT 250V/3A	S6-1-C90	S937530090
		10...30 V CC	NPN/PNP	S6-5-C90	S937530000
			PNP NA/NC	S6R-5-C90-P	950201190
			PNP	S6T-5-C90-P	961031020
Tasteggio diffuso a lunga distanza	10...2000 mm	15...264 V CA	relè SPDT 250V/3A	S6-1-C200	950151140
		10...30 V CC	NPN/PNP	S6-5-C200	950201150
			PNP NA/NC	S6R-5-C200-P	950201200
			NPN NA/NC	S6R-5-C200-N	956101050
Sbarramento a retroriflessione	0,1...6 m (su riflettore R2)	15...264 V CA	relè SPDT 250V/3A	S6-1-A6	S937330090
		10...30 V CC	NPN/PNP	S6-5-A6	S937330000
			PNP	S6T-5-A6-P	961031000
			PNP NA/NC	S6R-5-A6-P	950201170
Sbarramento polarizzato	0,1...5 m (su riflettore R2)	15...264 V CA	relè SPDT 250V/3A	S6-1-B5	S937420090
		10...30 V CC	NPN/PNP	S6-5-B5	S937420000
			PNP NA/NC	S6R-5-B5-P	950201180
			PNP	S6T-5-B5-P	961031010
Soppressione di sfondo	30...100 mm	10...30 V CC	PNP NA/NC	S6R-5-M10-P	950201230
	30...250 mm		NPN/PNP	S6-5-M25	S937830000
			PNP NA/NC	S6R-5-M25-P	950201220
			NPN NA/NC	S6R-5-M25-N	956101080
			PNP	S6T-5-M25-P	961041000
	100...500 mm		PNP NA/NC	S6R-5-M50-P	950201250
Proiettore/ricevitore (ricevitore)	0...20 m	15...264 V CA	relè SPDT 250V/3A	S6-1-F20	S937200090
		10...30 V CC	NPN/PNP	S6-5-F20	S937200010
			PNP NA/NC	S6R-5-F20-P	950201160
			PNP	S6T-5-F20-P	961211010
Proiettore-ricevitore (proiettore)	-	15...264 V CA	-	S6-1-G20	S937130090
		10...30 V CC	-	S6-5-G20	S937130000
			-	S6T-5-G20	961211000

## ACCESSORI

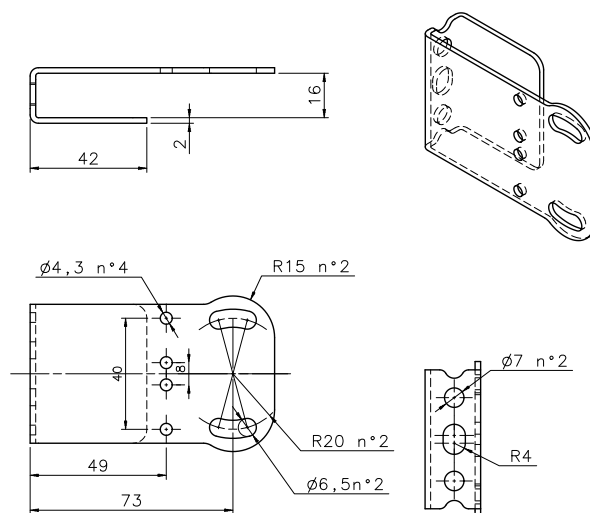




ST-5018



ST-5019



MODELLO	DESCRIZIONE	N° ORDINE
ST-5018	staffa protettiva	95ACC5310
ST-5019	staffa protettiva	95ACC5320
ST-5020	staffa di fissaggio	95ACC5330
ST-5021	staffa di fissaggio	95ACC5340
ST-504	staffa di fissaggio	95ACC2820
ST-5053	staffa protettiva	95ACC2410
ST-5054	staffa protettiva	95ACC2420
JOINT-S62	staffa protettiva con supporto snodato	95ACC2430

## CAVI

TIPO	DESCRIZIONE	LUNGHEZZA	MODELLO	N° ORDINE
Connettore M12 assiale	4 poli, grigio, PVC	3 m	CS-A1-02-G-03	95A251380
		5 m	CS-A1-02-G-05	95A251270
		7 m	CS-A1-02-G-07	95A251280
		10 m	CS-A1-02-G-10	95A251390
	4 poli, PUR	2 m	CS-A1-02-R-02	95A251540
		5 m	CS-A1-02-R-05	95A251560
Connettore M12 radiale	4 poli, grigio, PVC	3 m	CS-A2-02-G-03	95A251360
		5 m	CS-A2-02-G-05	95A251240
		7 m	CS-A2-02-G-07	95A251245
		10 m	CS-A2-02-G-10	95A251260
	4 poli, PUR	2 m	CS-A2-02-R-02	95A251550
		5 m	CS-A2-02-R-05	95A251570
Connettore M12 radiale con LED (per sensori NA PNP)	4 poli, grigio, PVC	3 m	CS-A2-12-G-03	95A251400
		5 m	CS-A2-12-G-05	95A251350
		10 m	CS-A2-12-G-10	95A251370
Connettore M12 assiale	4 poli, schermato, nero, PVC	3 m	CV-A1-22-B-03	95ACC1480
		5 m	CV-A1-22-B-05	95ACC1490
		10 m	CV-A1-22-B-10	95ACC1500
		15 m	CV-A1-22-B-15	95ACC2070
		25 m	CV-A1-22-B-25	95ACC2090
Connettore M12 radiale	4 poli, schermato, nero, PVC	3 m	CV-A2-22-B-03	95ACC1540
		5 m	CV-A2-22-B-05	95ACC1550
		10 m	CV-A2-22-B-10	95ACC1560
		15 m	CV-A2-22-B-15	95ACC1570
Connettore M12 assiale	4 poli, UL, nero, PVC	3 m	CS-A1-02-U-03	95ASE1120
		5 m	CS-A1-02-U-05	95ASE1130
		10 m	CS-A1-02-U-10	95ASE1140
		15 m	CS-A1-02-U-15	95ASE1150
		25 m	CS-A1-02-U-25	95ASE1160
Connettore M12 radiale	4 poli, nero	Connettore- non cablato	CS-A1-02-B-NC	G5085002
		Connettore- non cablato	CS-A2-02-B-NC	G5085003